

REQUIRED PLACARDS

- 1 **NORMAL CATEGORY AIRPLANE.**
OPERATE IN ACCORDANCE WITH FAA APPROVED FLIGHT MANUAL. INTENTIONAL SPINS PROHIBITED. NO ACROBATIC MANEUVERS ARE APPROVED.
- 2 TRANSFER TIP TANK FUEL IN LEVEL FLIGHT ONLY.
- 3 DESIGN MANEUVERING SPEED (NOTE 6) MPH
- 4 TIP TANK TRANSFER PUMPS
- 5 LEFT ON RIGHT
- 6 15 GALLON CAPACITY
- 7 (SEE NOTE (7) AND TYPICAL EXAMPLE BELOW)

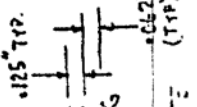
AIR SPEED LIMITATION
 MAXIMUM SPEED WITH LANDING GEAR EXTENDED (NORMAL) 165 MPH (143 KTS.)
 MAXIMUM DESIGN MANEUVERING SPEED 147 MPH (128 KTS.)
UTILITY CATEGORY AIRPLANE
 OPERATE IN ACCORDANCE WITH FAA APPROVED AIRPLANE FLIGHT MANUAL
INTENTIONAL SPINS PROHIBITED
 ALL ACROBATIC MANEUVERS APPROVED EXCEPT THOSE LISTED IN AIRPLANE FLIGHT MANUAL

FOR EXISTING PLACARD (BASED ON N35, P35)
 -7 EXISTING PLACARD REVISION (TYPICAL EXAMPLE)

AIR SPEED LIMITATION
 MAXIMUM SPEED WITH LANDING GEAR EXTENDED (NORMAL) 165 MPH (143 KTS.)
 MAXIMUM DESIGN MANEUVERING SPEED 142 MPH (123 KTS.)
NORMAL CATEGORY AIRPLANE
 OPERATE IN ACCORDANCE WITH FAA APPROVED AIRPLANE FLIGHT MANUAL
INTENTIONAL SPINS PROHIBITED
 NO ACROBATIC MANEUVERS APPROVED

REVISED PLACARD (BASED ON N35, P35)
 KB-1401
 SHEET 11 OF 12

NOTES.



- (1) ALL CHARACTERS TO BE BOLD FACE BLACK VERTICAL GOTHIC LETTERING SYMMETRICALLY CENTERED. SIZE TO BE AS INDICATED IN THIS NOTE (TIP)
- (2) PLACARD MATERIAL SHALL BE CLEAR BACKED HYLAR - SELF ADHESIVE
- (3) LOCATE IN FULL VIEW OF PILOT
- (4) LOCATE ON WING TIP TANK GUIDE PANEL ASSEMBLY
- (5) LOCATE AT EACH TIP TANK FUEL FILLER CAP.
- (6) 125 MPH FOR MODELS A35 THROUGH G35
 136 MPH FOR MODELS H35 THROUGH M35
 142 MPH FOR MODELS N35 AND P35
 125 MPH FOR MODEL 35R
- (7) REVISE EXISTING AIRPLANE PLACARD WHICH REFERENCE UTILITY CATEGORY AND MANEUVERING SPEEDS TO PREVENT CONFLICTS WITH -1 AND -3 PLACARDS. A TYPICAL EXAMPLE OF THIS REVISED PLACARD BASED ON A35 AND P35 OF THIS REVISED PLACARD IS SHOWN ON THE DRAWING EXISTING PLACARDS IS SHOWN ON THE DRAWING

REV C 3/28/16 ADDED - 6, 7, 8, 9, 10, 11, 12, 13, 14, 15, 16, 17, 18, 19, 20, 21, 22, 23, 24, 25, 26, 27, 28, 29, 30, 31, 32, 33, 34, 35, 36, 37, 38, 39, 40, 41, 42, 43, 44, 45, 46, 47, 48, 49, 50, 51, 52, 53, 54, 55, 56, 57, 58, 59, 60, 61, 62, 63, 64, 65, 66, 67, 68, 69, 70, 71, 72, 73, 74, 75, 76, 77, 78, 79, 80, 81, 82, 83, 84, 85, 86, 87, 88, 89, 90, 91, 92, 93, 94, 95, 96, 97, 98, 99, 100

BERYL D'SHANNON AVIATION SPECIALTIES

INSTALLATION WING TIP
 FUEL TANKS - 30 GAL.
 (PLACARDS)
 SCALE: NONE
 DWG. NO. B1404
 SHEET 1 OF 2

REQUIRED PLACARDS

FUEL CONSUMPTION RATE MAY EXCEED TIP TANK TRANSFER RATE. INITIATE WING TIP FUEL TRANSFER WHEN MAIN TANKS ARE AT LEAST 1/2 FULL. MONITOR MAIN TANK GAGES TO PREVENT OVERFLOW.

-8

-9

80 OCTANE MIN.
100 OCTANE MIN.

(1), (2), (3), (10)

(5), (8), (9), (10)

(8) All characters to be bold face vertical Gothic lettering symmetrically centered. Size as indicated in this note.



(9) DETERMINE WHICH PLACARD APPLIES (80 OR 100 OCTANE) ON INSTALLATION. MUST AGREE WITH EXISTING MAIN TANK PLACARD.

(10) FURNISH 2 PLACARD SETS WITH INSTALLATION KIT FOR THIS REQUIREMENT. ONE SET TO BE BLACK LETTERING AND ONE SET WHITE LETTERING. DETERMINE PLACARD COLOR FOR USE ON INSTALLATION BASED ON MAXIMUM CONTRAST.

BERYL D'SHANNON AVIATION SPECIALTIES		SCALE: A
INSTALLATION	WING TIP	DWG. 81404
(PLACARDS)		SHT 201
DRAWN BY K.E. LEONILE	CHECKED KEL	DATE 7/21/05

KB-1401
SHEET 12 OF 12